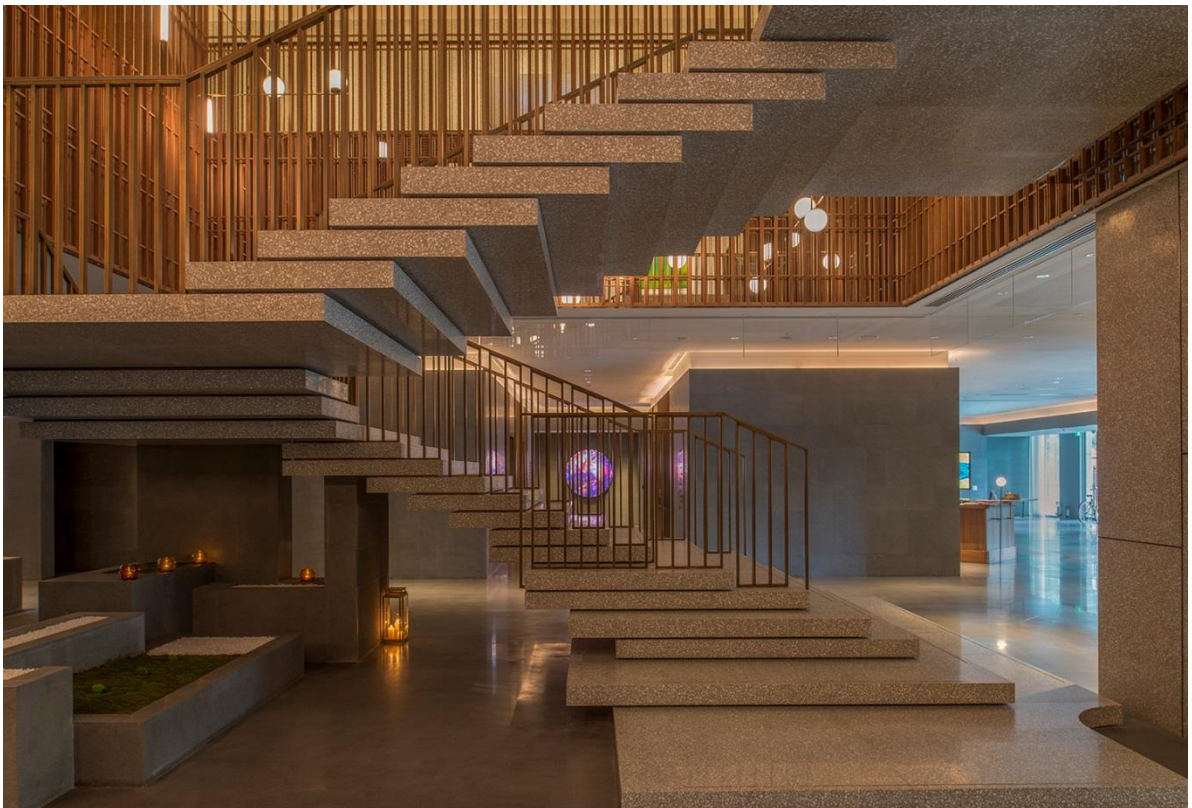


## The Sukhothai Hotels & Resorts' first foray into China **The Sukhothai Shanghai**

Creates A Place Apart in the Bustling Heart of Shanghai



The Sukhothai Shanghai, a contemporary lifestyle hotel under The Sukhothai Hotels & Resorts of HKR International, is located in the coveted Jing'an district, marking a chapter of the prestigious international hotel and resort group as their first foray into the Mainland China's hospitality scene. An exquisite work of design by the internationally-acclaimed Neri&Hu Design and Research Office, The Sukhothai Shanghai is set to become the city's lifestyle landmark, bringing together sophisticated design, thoughtfully curated experiences and attentive hospitality to surprise and inspire.

Characterised by originality, simplicity and functionality, the hotel's distinctive design features an alluring collection of materials and textures such as natural stones, fine woods, delicate silk and polished brass, a well-balanced yet stylish colour scheme, and carefully-designed details, while incorporating a series of sustainable practices in architectural design and material selection to reduce the environmental impact. The hotel also boasts a curated selection of over 30 artworks featuring local and international artists, including two large-scale interactive installations by Japanese digital art collective teamLab.

*The Sukhothai Shanghai - Creates A Place Apart in the Bustling Heart of Shanghai*



The Sukhothai Shanghai comprises 170 tastefully-designed guest rooms and 31 residence-style suites from 44 to 172 square-metres, among the largest in the city. LEED accredited, guest rooms are fitted with diatom-silica clay walls in soothing neutral hues, the innovative, environmentally-friendly material is highly effective in air purification, humidity regulation and sound absorption to ensure a healthy and peaceful stay. All guest rooms and suites are also appointed with a spacious bathroom, amenities from Australian organic brand Grown Alchemist, 55" or 65" high-definition television with Sonos sound bar and on-demand access to an array of media and infotainment content through IPTV and satellite TV. Thoughtful extras such as advanced in-room control technology with intuitive interface, wireless high-speed internet connection, and in-room refreshment and wine bar complete the exquisite and inviting spaces.



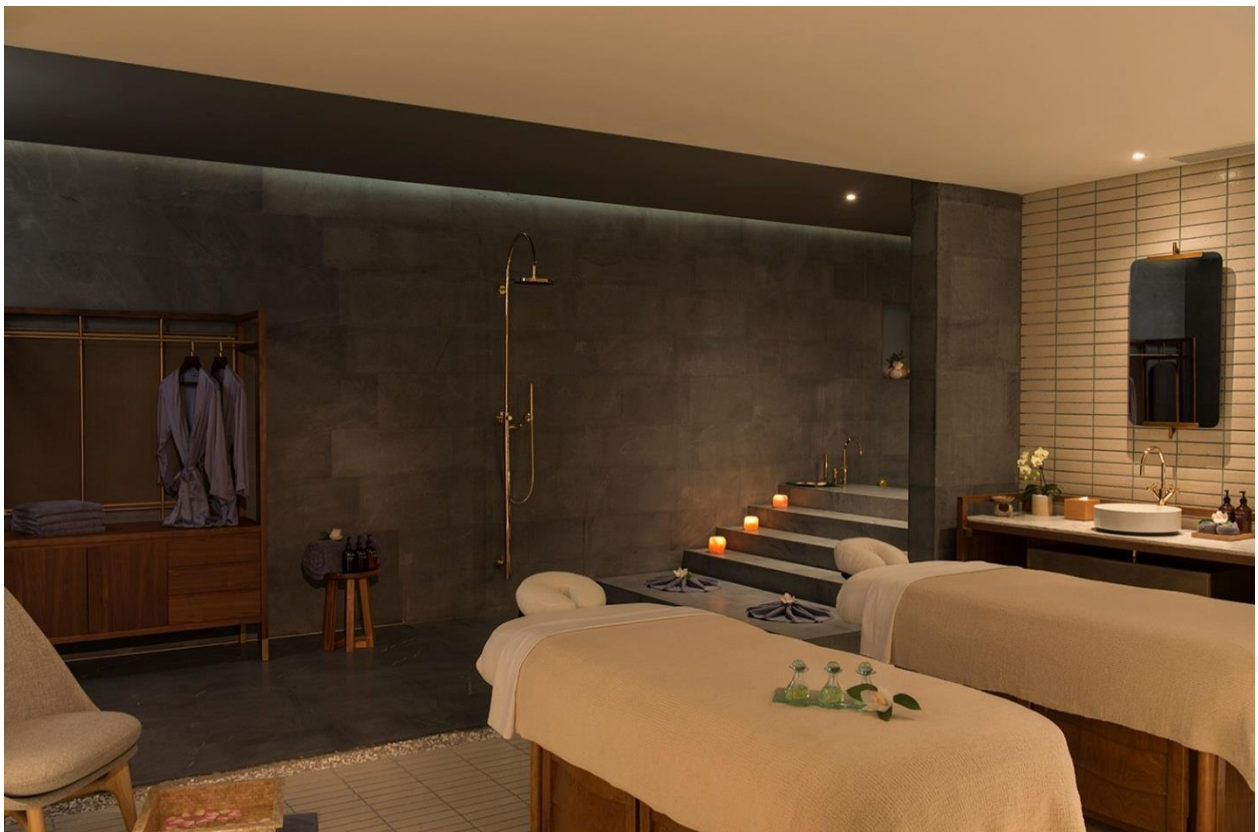
Vibrant and eclectic, The Sukhothai Shanghai's five inspiring dining venues are poised to become the city's dining destinations. The Black Pearl One-diamond Italian restaurant La Scala celebrates the humble Italian virtues of freshness and simplicity. With an effortless elegance to match, the restaurant presents time-honoured recipes with a touch of modern flair and original creations, paired with a fine selection of Italian boutique wines. All-day-dining restaurant URBAN Café, welcomes an exciting upgrade featuring a spacious and verdant outdoor urban garden. The culinary team led by Thai Chef Anchalee Luadkham brings authentic Thai delicacies to the menu through premium ingredients such as seafood, meats and seasonal vegetables, enhanced by finely crafted sauces and secret spices. URBAN Lounge offers a sophisticated collection of more than 350 global gins and premium tonics, light refreshment and afternoon tea. The ZUK Bar, a cosy boutique bar with a newly remodeled outdoor garden terrace is the best location to enjoy artisanal cocktails with intriguing elixirs house-made by mixologists. Modern café Beans & Grapes serves a healthy selection of quality light fare and beverages during the day.

The second floor is home to the Grand Shanghai Ballroom, along with six multi-purpose function rooms, spanning a spacious 450 square metres. Crafted for exquisite social and corporate events, conferences and exhibitions, the meeting facilities are equipped with high-definition widescreen displays, full-range quality acoustics and lighting effects, all efficiently operated from an intelligent iPad master control. The Pantry is a communal space for the event delegates to relax and socialise during refreshment breaks.

*The Sukhothai Shanghai - Creates A Place Apart in the Bustling Heart of Shanghai*



The health and wellness facilities include a 198-square-metre Fitness Studio complete with state-of-the-art equipment and a separate studio for yoga, Pilates and group exercise. Guests can also take advantage of the 25-metre heated indoor pool, sauna and steam room. The Retreat offers a range of Southeast Asian spa therapies and signature wellness programmes.



*The Sukhothai Shanghai - Creates A Place Apart in the Bustling Heart of Shanghai*

With a passion for genuine hospitality, the hotel continues Sukhothai's philosophy, taking an intelligent approach to deliver personalised service and enriching experiences to worldly travellers. Tending to every aspect of the hotel's services in utmost detail, The Sukhothai Shanghai has enlisted the help of the students from the respected Raffles Design Academy to design its stylish set of associate uniforms. The concierge team at the hotel introduces locally-inspired experiences for guests to explore the city through interactive, immersive programmes, including a series of city walks unveiling the eclectic side of Shanghai, and a tour around the neighbourhood on Kate Wood bamboo bikes that are handcrafted renewable resources.

"Having established The Sukhothai Bangkok as one of Asia's most iconic properties with a loyal global following of discerning travellers, we are excited to have a presence in China and The Sukhothai Shanghai has certainly make the mark in this city with a superior product and service excellence," says Thomas Schmitt-Glaeser, General Manager of The Sukhothai Shanghai. "The Sukhothai Shanghai's unique character was inspired by the dynamics of this city, and authentically reflected in the design, lifestyle facilities and amenities. The Sukhothai Shanghai is set to become 'A Place Apart', offering experiential hospitality through personable service in the vibrant city of Shanghai".

A member of Small Luxury Hotels of the World and Global Hotel Alliance, The Sukhothai Shanghai forms an integral part of the HKRI Taikoo Hui mixed-use complex, which also includes Grade-A office towers and a premium lifestyle shopping mall, all located in the retail and tourist hotspot of West Nanjing Road and Shimen Yi Road.

- ENDS -

**About The Sukhothai Hotels & Resorts**

The Sukhothai hotel logo consists of 22 diamond droplets forming the Chedi design that was inspired by Sukhothai, the first capital of Siam. Each drop of diamond, polished to an identical marquise shape and seemingly finding its own position within the whole represents the individuals of the qualified hotel associates who, guided by intuition yet precise in every detail, anticipate our guests' needs and cater to them exceptionally. Each property within the brand portfolio remains distinct and uniquely designed while maintaining the essential quality that is the hallmark of the brand.

### **About HKRI Taikoo Hui**

Located at 789 Nanjing Road (West), HKRI Taikoo Hui is a 50:50 joint venture between two Hong Kong listed companies – HKR International and Swire Properties, with a total investment of RMB17 billion. The development covers an area of about 63,000 square metres, and a gross floor area of about 322,000 square metres, including a lifestyle shopping mall, two premium Grade A office towers, three boutique hotels and serviced apartments, and more than 1,200 parking spaces. It has direct access to Metro Line 13, with Line 2 and Line 12 at West Nanjing Road station only walking distance away. The development is also strategically located next to Yan'an Elevated Highway and N-S Elevated Highway, providing direct access to the Hongqiao Transportation Hub and Pudong International Airport.

### **About HKR International Limited**

HKR International Limited has diversified interests in real estate development and investment, property management, luxury hotels and serviced apartments, healthcare services and other investments in Hong Kong, mainland China and across Asia. The Company's diverse portfolio includes Discovery Bay and CDW Building in Hong Kong, HKRI Taikoo Hui in Shanghai, and a number of premium residential and commercial properties in Thailand and Japan. HKRI has been listed on The Stock Exchange of Hong Kong since 1989, under the Stock Code of 00480. Website: [www.hkri.com](http://www.hkri.com).

### **About Small Luxury Hotels of the World**

Small Luxury Hotels of the World™ (SLH) is the most desirable community of independently minded travellers and independently spirited hotels in the world. We turned the luxury boutique hotel into a phenomenon and selected the distinctive, the diverse and the downright delightful. People, places and experiences with individual character, intimate charm and inherent class. We've personally visited, vetted and verified over 520 hotels in more than 90 countries. We are envisioning a future where people experience the world with intention, experience its intensity and protect its integrity. Be part of the community - join us at INVITED, visit us at [www.slh.com](http://www.slh.com), contact a travel agent or call the Small Luxury Hotels of the World VIP Desk. Click [here](#) to view a full contact listing by country.

### **About GHA Discovery**

Launched in 2010, GHA DISCOVERY is the world's largest loyalty programme for independent hotel brands, featuring more than 500 hotels, resorts and palaces across 35 brands. Members enjoy VIP recognition, thoughtful benefits and generous rewards at home or away. Recently the programme has evolved to include an additional tier and flexible paths to upgrade through nights/stays, eligible purchases or number of brands stayed, making it easier and faster for members to reach elite status. Unlike more traditional programmes, GHA DISCOVERY does not ask members to count points towards their next upgrade. Instead, members earn and spend

DISCOVERY Dollars (D\$), an exclusive rewards currency. They also enjoy members-only Experiences curated by each hotel and have access to all their benefits and rewards at properties close to home, without a stay, through member-only Local Offers.

For more information about GHA DISCOVERY or to join, visit [www.ghadiscovery.com](http://www.ghadiscovery.com) or download the GHA DISCOVERY mobile app. Travellers can also connect with GHA DISCOVERY on Instagram and Facebook.

**For media enquiries, please contact:**

The Sukhothai Shanghai  
Anna Zheng  
Director of Sales & Marketing  
[Anna.zheng@sukhothai.com](mailto:Anna.zheng@sukhothai.com)  
t: (8621) 2283 1668

The Sukhothai Shanghai  
Fan Xing  
Director of Marketing Communications  
[Fan.xing@sukhothai.com](mailto:Fan.xing@sukhothai.com)  
t: (8621) 2283 1675